
W I S C O N S I N A R T S B O A R D

1 9 8 3 - 1 9 8 5

B I E N N I A L R E P O R T

107 South Butler Street
Madison, Wisconsin 53703
608/266-0190

Governor
Anthony S. Earl

Chairperson
Joseph W. Garton

Executive Director
Arley G. Curtz



Wisconsin Arts Board

January 31, 1986

The Honorable Anthony S. Earl
Governor of Wisconsin
State Capitol
Madison, WI 53702

Dear Governor Earl:

Attached is the 1983-85 Biennial Report for the Wisconsin Arts Board as requested by Section 15.04(1)(d) of the Wisconsin Statutes. Included in the report are reviews of the agency's programs and operations during the 1983-85 biennium.

Sincerely,


Arley G. Curtz
Executive Director

AGC:ash

Enclosure

TABLE OF CONTENTS

The Wisconsin Arts Board in Brief	1
Members of the Board	3
Organizational Chart	4
Report from the Chairman	5
Report from the Executive Secretary	6
Funding Programs	7
Financial Report	12
Appendix	

THE WISCONSIN ARTS BOARD IN BRIEF

The Wisconsin Arts Board (WAB) was established in 1973 as the state agency responsible for the support and development of the arts in Wisconsin. A major portion of the agency's biennial appropriation from the Wisconsin State Legislature is disbursed to eligible artists and non-profit organizations in the form of matching grants. Additional funds for grants are also allocated to the Wisconsin Arts Board by the National Endowment for the Arts, a federal agency.

The Board itself consists of 12 members who are appointed by the Governor of Wisconsin. These members serve, without compensation, for a minimum of one three-year term. They are selected to represent various geographic areas of the state as well as diverse arts and community constituencies. Members of the Board are responsible for establishing the agency's policies and programs, and approving all grants awards. The Board meets a minimum of four times per year; meetings are open to the public.

The Board employs an Executive Secretary who serves as Chief Administrative Officer, supervising staff, programs, and day-to-day operations. The agency's full-time program and support staff implement policies and programs, including grants, and extend technical and informational services to the public.

The Wisconsin Arts Board is advised each year by panelists who are artists or professionals in various arts disciplines, and community representatives. The panels meet, by discipline, and evaluate individual grant applications relative to criteria determined by the Board. Panels make qualitative and fiscal recommendations to the Board.

The Wisconsin Arts Board operates both as a service agency, providing information and technical assistance, and a funding agency for arts activities and projects throughout Wisconsin. The Board supports all artistic disciplines in every segment of Wisconsin's arts community, including individual artists, community arts groups, arts-producing and exhibiting organizations, governmental units, schools, and other institutions.

Services offered by the Wisconsin Arts Board throughout the 1983-85 biennium included:

- professional assistance to communities to develop community arts programs
- technical assistance to non-profit arts organizations in financial management, program planning, audience development, and marketing
- a quarterly newsletter containing state arts news and Wisconsin Arts Board program information and deadlines

- a slide and resume registry of Wisconsin artists as a resource for those seeking artists' services
- funding information and referrals, reference materials, mailing lists, and resource directories such as the "Arts and Crafts Fair Directory" available on request.

Funding programs of the Wisconsin Arts Board included:

- Organizational Projects
- Salary Assistance
- Artistic Program Support
- Performing Arts Network-Wisconsin
- Wisconsin Challenge Grant
- Artists-in-Residence
- Individual Projects
- Fellowships

The Percent for Art Program, while not a funding program of the Wisconsin Arts Board, was, and continues to be, administered by the agency.

WISCONSIN ARTS BOARD

Members of the Board

1983-84

- (1) DeEtte Beilfuss
- Phyllis Berney
- Patricia Blankenburg
- Jess Brownell
- Diana Cheeks
- Duane DeLorme
- Joseph Garton
- (1) Betty Hanson
- Richard Hawkins
- (1) Jeanette Kooiman
- (2) Malcolm McLean
- Michael Skindrud
- Richard Teschner
- Jeanne Tregoning
- Benna Wilde

(1)Term expired 5/1/84

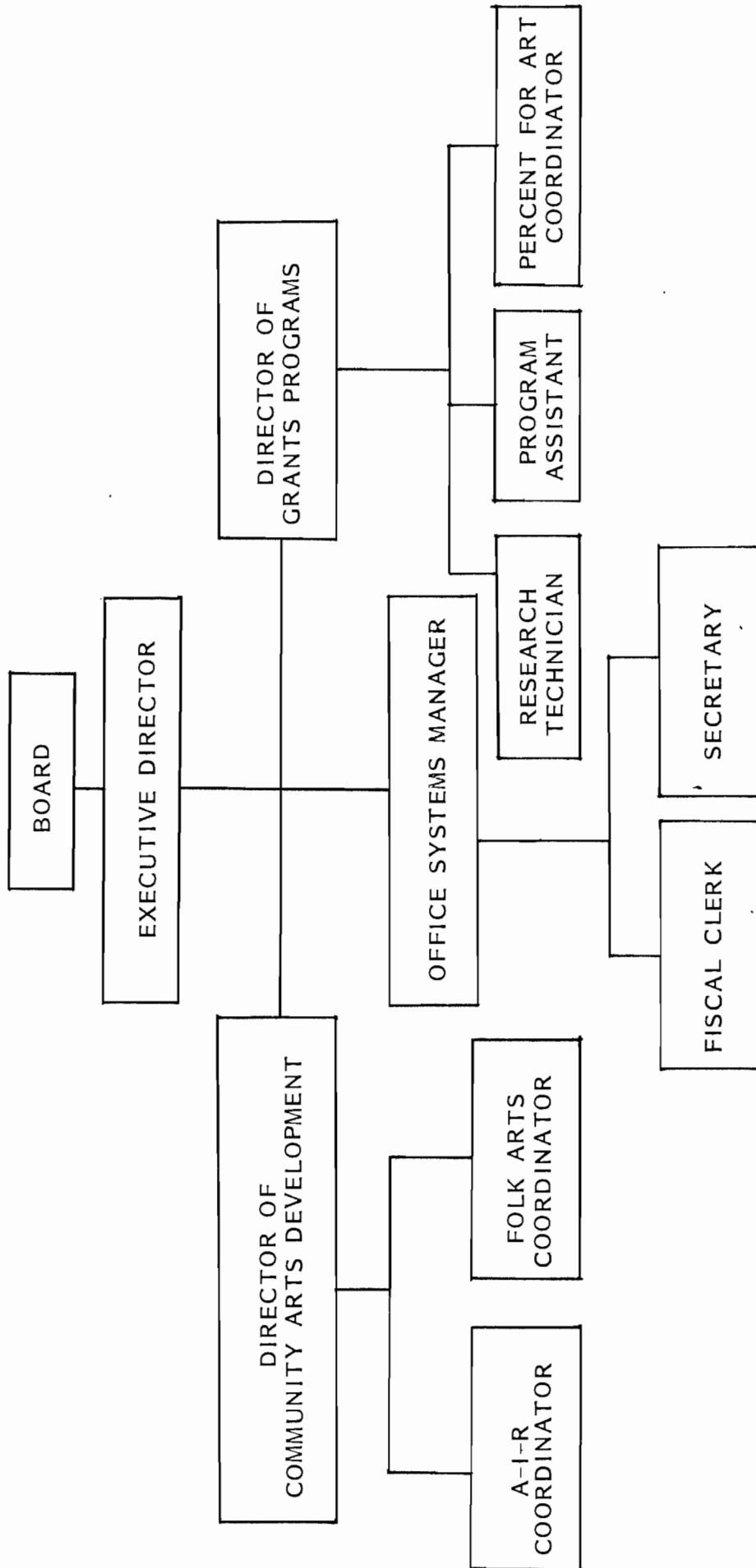
(2)Resigned

(3)Term expired 5/1/85

1984-85

- Patricia Blankenburg
- (3) Phyllis Berney
- Jess Brownell
- Diana Cheeks
- Duane DeLorme
- Joseph Garton
- Richard Hawkins
- Karlyn Holman
- Ben Sidran
- (3) Michael Skindrud
- (3) Richard Teschner
- Jeanne Tregoning
- Michael Walter
- Benna Wilde

WISCONSIN ARTS BOARD
ORGANIZATIONAL CHART
1983-85 BIENNIUM



REPORT FROM THE CHAIRMAN

The 1983-85 biennium was a period of great change for the Wisconsin Arts Board. Seven of the twelve person board and four of the six person program staff were replaced. During the first year of the biennium, sharp disagreements existed among constituents and among board members about the responsiveness of the agency to the needs of its constituency and the directions of the board. On June 4, 1984, a slate of officers nominated to serve the ensuing twelve months failed for lack of a second and a new slate was elected. On June 27, 1984, a highly critical Legislative Audit Bureau report was issued. On July 10, 1984, the Executive Director was dismissed. The next six months were spent 1) conducting a nationwide search for an Executive Director, 2) complying with the Legislative Audit Bureau directives to transform the agency, and 3) administering the programs. On December 21, 1984, a six-month progress report was submitted to the Legislative Audit Bureau which fully satisfied the many concerns detailed in the report. On January 28, 1985, a new Executive Director began work. During the remaining five months of the biennium, the agency continued to administer all of the programs and embarked on its own board directed re-examination of program and fiscal policies.

It is inappropriate to enumerate here all of the specific accomplishments and reforms effected during the biennium. For a full understanding of the changes, the previously noted documents should be read in their entirety. However, the most fundamental change ought to be noted here. The Wisconsin Arts Board is now an open, truly public agency. Input from all levels (board, panels, constituents) is actively solicited and publicly debated in open meetings.

The board believes that present funding is adequate for modest levels of service. But we are confident that the agency is now in order. Should the legislature reassess priorities and decide that Wisconsin cannot afford to lag behind the rest of the country in arts development, the Wisconsin Arts Board is now prepared to meet the challenge.

Joseph W. Garton

REPORT FROM THE EXECUTIVE SECRETARY

Hindsight at this juncture is necessarily short and with perhaps less clarity than one usually imagines. The last five months of the 1983-85 biennium have been an exciting, rewarding period, personally and professionally. A mid-winter move from the known Utah environment and the state arts agency to its counterpart here in Wisconsin could have been nothing less. Why do we make these moves? A question needing an answer. Quite simply, it is because of what has been accomplished in the arts and what needs to be accomplished. The public partnership begun in 1965 between the National Endowment for the Arts and state arts agencies has resulted in a major movement stimulating, encouraging, and developing the arts. With combined resources of the partnership totaling over \$365 million this year, I cannot think of another force that has effected such significant, widespread change in the cultural fabric of this country in the mere space of two decades. What we do as state arts agencies is important, it makes a difference in the lives of the people we serve, and yes, there is still much more, given adequate resources, we must do. As you read through this report, noting programs, grant activities, and project initiatives, I am sure you will agree with me that the Wisconsin Arts Board's role in the continued development of the arts in our state has been impressive. To all the many, many players in this ongoing work...staff, board members, panelists, constituents, I thank you. The record for the biennium speaks for itself; it is a good one, a solid one that will serve marvelously as a base for future growth of the arts in our state.

Arley G. Curtz

FUNDING PROGRAMS

The Wisconsin Arts Board assists arts organizations and individual artists through a variety of funding programs designed to provide broad public access to the arts, strengthen the state's artistic resources, and create opportunities for individuals of exceptional talent. The funding programs are administered through General Grants and Community Arts Development areas.

GENERAL GRANTS

The General Grants funding programs assist a broad range of artistic activities of Wisconsin arts organizations and individual artists. .

During the 1983-85 biennium, grants were awarded as follows:

Artistic Program Support

Artistic Program Support Grants provided partial support for the programs of professional arts-producing organizations serving as resources for a significant portion of the state. 15 grants were awarded totaling \$463,495.

Emergency Action

Emergency Action Grants provided a limited number of small grants, awarded by the Executive Director and the Chairman of the Board. 23 artists and organizations were awarded \$17,813.

Fellowships

Fellowships provided unrestricted cash awards for outstanding visual and literary artists of Wisconsin. 12 artists received \$60,000.

Individual Projects

Individual Project Grants provided matching funds for the costs associated with the completion of works in progress. 35 Individual Grants were awarded totaling \$85,790 for completing novels, short stories, sculptures, paintings, compositions, and choreography.

Organizational Projects

Organizational Project Grants provided matching funds for costs associated with artistic or administrative projects. 110 Organizational Grants were awarded totaling \$353,450 for activities including festivals, promotion,

performances, consultancies, exhibitions, commissions, and publications.

Salary Assistance

Salary Assistance Grants awarded funds to provide partial support of new, permanent, top level artistic or administrative positions for Wisconsin non-profit arts organizations. These grants were generally awarded on a three-year declining match formula, a process through which the organizations assumed the responsibility for the full costs of the position. 21 Salary Assistance Grants were awarded totaling \$103,433.

COMMUNITY ARTS DEVELOPMENT

The purpose of the Community Arts Development Program is to encourage broad public involvement in and local responsibility for the planning and support of local arts programs. The goals in this area are to develop programs which address community needs and preserve a place in contemporary life for the traditional arts.

The Community Arts Development Program serves as a major vehicle of the Wisconsin Arts Board for providing all Wisconsin citizens, especially those in underserved geographic regions, with access to the arts.

In FY 84, four funding programs were included in the Community Arts Development area: Artists-in-Residence, Folk Arts, Performing Arts Network-Wisconsin, and Wisconsin Challenge Grant. Because of program staff vacancies in FY 85, all but the Folk Arts Program were administered through the General Grants area.

Artists-in-Residence

The Artists-in-Residence Program provides for the professional development of artists and for broad public access to their works by supporting opportunities for artists to live and work in communities throughout Wisconsin. The program awards matching grants to schools and other non-profit organizations to have professional artists in residence for periods ranging from one week to a full year.

During the 1983-85 biennium, the Wisconsin Arts Board awarded 143 grants totaling \$229,061 for Artists-in-Residence projects in the areas of visual arts, filmmaking, creative writing, music, theatre, dance, storytelling, jazz, and folk arts.

Other activities during 1983-85 included conferences and technical assistance workshops for artists and educators,

increased length of residency projects, and joint sponsorship with the Department of Public Instruction of ARTSWORLD, a summer camp residency for talented high school students. This residency included students from all areas of the state working with master artists in the areas of painting and sculpture, music improvisation, creative writing, dance, and theatre. Emphasis in the two-week program was on integrating various art forms.

Folk Arts

The Folk Arts Program of the Wisconsin Arts Board began activities in the summer of 1983 with the hiring of a Folk Arts Coordinator.

During the 1983-85 biennium, Folk Arts activities included:

- a professional Folklore Conference which suggested future directions for the program
- the creation of an advisory board
- public meetings held in various regions of Wisconsin to enable the Coordinator to make contact with the field
- development of a Folk Artists-in-Residence Program
- establishment of an annual Governor's Heritage Award
- on-going technical assistance in the field reaching more than 60 organizations
- meetings with other Folk Arts Coordinators within a nine-state region.

Folk Arts awards given during the period include 11 Apprenticeship awards totaling \$20,060 and 12 Folk Arts-related Project awards totaling \$27,450.

The Performing Arts Network-Wisconsin

Through the Performing Arts Network-Wisconsin, matching grants for partial artistic fee support were awarded to presenters of performing arts series. The goals of the program are to encourage community involvement in the planning of a performing arts series, to develop a statewide network of presenters, and to strengthen the administrative capabilities of presenters.

During the 1983-85 biennium, 38 organizations received \$242,364 in awards to assist them in presenting 213 events.

The Wisconsin Challenge Grant

The Wisconsin Challenge Grant is a three-year effort to increase local public and private contributions to the arts, using Federal and State funds as a leverage.

During FY 84, the ten communities participating in the program completed documentation of their base year, against which the next three years are to be compared. In Round I, ending December 31, 1984, the challenge placed before the participants was to exceed their base year contributions in order to receive an award equal to 25% of those contributions. At the end of Round I, \$150,000 in Federal funds and \$307,000 in State funds were distributed to match \$2,337,106 in local public and private contributions to the arts, a total of \$870,000 in excess of base year contributions.

Round II of the Wisconsin Challenge Grant began on January 1, 1985. Because the Challenge Grant Program is part of the Locals Test Program of the National Endowment for the Arts, and carries with it the obligation to raise \$300,000 in new, local, public contributions to the arts, the Round II challenge formula was designed to stimulate greater effort in raising public dollars. Local public funds raised in excess of the base will be matched at 60%, whereas private contributions in excess of the base will be matched at 12%.

The completion of Round II will occur in FY 86. It is anticipated that a substantial portion of the \$275,700 allocated to this program in FY 86 will be distributed to the eight Round II participants. The obligation to the National Endowment for the Arts will also be substantially achieved, the balance of which will be met in Round III.

PERCENT FOR ART PROGRAM

Recognizing that art is an integral part of our environment, the Wisconsin Legislature in 1980 created a program that provides money to be spent to purchase or commission original works of art for state-constructed public buildings.

Under the law, 2/10 of one percent of the funding for new state building projects costing \$250,000 or more must be used to acquire works of art by living artists, preferably from Wisconsin. The benefits from the program include employment opportunities for Wisconsin artists, public access to works of art on a daily basis, and a reaffirmation of the quality of human creativity.

The impact of this legislation is unique and important. The state will build a collection of public art, and artists will enjoy new opportunities to earn a living from their art. Unlike assistance provided to visual artists by other WAB programs, the Percent for Art Program works on the basis of a direct contractual agreement with artists to acquire artwork.

For each state building project, the Board convenes an Advisory Committee to either 1) choose works of art for direct purchase or 2) select artist(s) to be commissioned to create work especially for the site. Artists and artworks are sought through competitions administered by the Percent Program.

In the fiscal 1983-85 biennium, the State Building Commission approved 19 projects for inclusion in the program. These projects will generate up to \$99,598 in sales and commissions to Wisconsin artists. The projects include university buildings, state office buildings, and military installations as well as state correctional institutions.

Artworks have been acquired for 26 state buildings since the Program was activated in 1981. Acquisitions for 13 building projects have been underway or completed during FY 84-FY 85.

WISCONSIN ARTS BOARD

Financial Report for the Fiscal Year Ended

June 30, 1984

Fiscal Year 83 Balance Forward		\$ 18,744
<u>Income:</u>		
<u>State Funds</u>		
Operations	\$244,400	
Aids	<u>563,900</u>	
Total State Funds		808,300
<u>Federal Funds</u>		
Basic State Grant	\$318,200	
Artists-in-Residence Grant	84,010	
Folk Arts Development Grant	40,000	
Theatre Touring Grant	25,000	
Dance Touring Grant	<u>12,000</u>	
Total Federal Funds		<u>479,210</u>
Total Income		<u>\$1,306,254</u>

Expenditures:

Aids

<u>General Grants Program</u>		
Artistic Program Support	\$237,495	
Emergency Action Grants	15,013	
Fellowship Awards	30,000	
Individual and Organizational Projects	250,139	
Salary Assistance	<u>52,427</u>	
Total General Grants		\$585,074
<u>Community Arts Development Program</u>		
Artists-in-Residence Grants	\$107,397	
Folk Arts Grants	1,675	
Performing Arts Network-Wisconsin	<u>114,860</u>	
Total Community Arts Development Grants		223,932
<u>Special Programs</u>		
ASAAUM Dues	\$25,231	
Arts Administration Intern	<u>7,300</u>	
Total		<u>32,531</u>
Total Aids		\$841,537

Wisconsin Arts Board
 Financial Report for the Fiscal Year Ended
 June 30, 1984

<u>Administration and Program Support</u>	
Salaries and Fringe	\$275,609
Supplies and Services	113,124
Equipment	<u>1,859</u>
Total Administration and Program Support	<u>390,592</u>
Total Expenditures	\$1,232,129
Appropriation Balance Lapsed	<u>1,199</u>
Total Deductions from Income	\$1,233,328
Balance Carried Forward	<u>72,926</u>
Total	<u>\$1,306,254</u>

Financial Report for the Fiscal Year Ended
 June 30, 1985

Fiscal Year 84 Balance Forward		\$ 72,926
<u>Income:</u>		
<u>State Funds</u>		
Operations	\$244,400	
Aids	713,900	
Governor's Portrait	<u>10,000</u>	
Total State Funds		968,300
<u>Federal Funds</u>		
Basic State Grant	\$387,900	
Artists-in-Residence Grant	87,500	
Folk Arts Development Grant	38,500	
Theatre Touring Grant	25,000	
Folk Arts Apprenticeship Grant	22,800	
Locals Test Program	<u>150,000</u>	
Total Federal Funds		<u>711,700</u>
Total Income		<u>\$1,752,926</u>

Wisconsin Arts Board
 Financial Report for the Fiscal Year Ended
 June 30, 1985

Expenditures:

Aids

General Grants Program

Artistic Program Support	\$226,000	
Emergency Action Grants	2,800	
Fellowship Awards	30,000	
Individual and Organizational Projects	189,071	
Salary Assistance	<u>51,006</u>	
Total General Grants		\$498,877

Community Arts Development Program

Artists-in-Residence Grants	\$121,692	
Folk Arts Apprenticeships	14,300	
Performing Arts Network-Wisconsin	127,504	
Wisconsin Challenge Grant	457,040	
Folk Arts Grants	<u>12,400</u>	
Total Community Arts Development Grants		732,936

Special Programs

ASAAUM Dues	\$27,322	
Arts Administration Intern	<u>11,725</u>	
Total		<u>39,047</u>

Total Aids \$1,270,860

Administration and Program Support

Salaries and Fringe	\$218,442	
Supplies and Services	147,163	
Equipment	<u>933</u>	
Total Administration and Program Support		<u>366,538</u>

Total Expenditures \$1,637,398

Appropriation Balance Lapsed 16,053

Total Deductions from Income \$1,653,451

Ending Balance Carried Forward

Encumbrances	\$16,634	
Continuing Balance	<u>82,841</u>	

Balance Carried Forward 99,475

Total \$1,752,926

APPENDIX

Grants Awarded by the Wisconsin Arts Board during the 1983-85 Biennium

Key to Program Abbreviations

A-I-R - Artists-in-Residence

APS - Artistic Program Support

EAG - Emergency Action Grant

GG - General Grants

PAN-Wisconsin - Performing Arts Network-Wisconsin

SA - Salary Assistance

GRANTS AWARDED IN FISCAL YEAR 84

GRANTEE	PROGRAM/DISCIPLINE	AMOUNT
<u>ALGOMA</u>		
Algoma Elementary School PTA	AIR/Visual	\$ 1,300
<u>AMERY</u>		
School District of Amery	AIR/Visual	\$ 379
<u>AMHERST</u>		
Amherst Elementary School	AIR/Interdisciplinary	\$ 800
<u>APPLETON</u>		
Appleton Area School District	AIR/Music	\$ 6,425
Brunet, David Paul	Project/"Voices on the Prairie"	\$ 2,015
Children's Ballet Theatre	EAG/"The Emperor's Nightingale"	\$ 1,000
Holy Angels School	AIR/Folk Arts	\$ 300
Lawrence University	PAN-Wisconsin	\$ 1,550
<u>ARGYLE</u>		
Argyle Schools	AIR/Visual	\$ 638
<u>ASHLAND</u>		
Allen, David A.	Project/"Writing a Novel"	\$ 2,145
Chequamegon Bay Arts Council	Project/"IMAGINE Newsletter"	\$ 850
Chequamegon Bay Arts Council	Project/"Dance of the Seasons"	\$ 1,900
Northern Images, Inc.	EAG/"Warm Hearts for Cold Evenings"	\$ 600
Northland College Arts & Letters Series	PAN-Wisconsin	\$10,680
<u>BALSAM LAKE</u>		
Unity School District	AIR/Literary	\$ 1,084
<u>BANGOR</u>		
School District of Bangor	AIR/Literary	\$ 445
<u>BARABOO</u>		
UW-Madison Board of Regents System for: UWC-Baraboo/Sauk County	PAN-Wisconsin	\$ 6,360
<u>BEAR CREEK</u>		
St. Mary School	AIR/Theatre	\$ 454

GRANTEE	PROGRAM/DISCIPLINE	AMOUNT
<u>BELOIT</u>		
Beloit-Turner School District	AIR/Folk Arts	\$ 822
<u>BIRCHWOOD</u>		
AWARE Community Council	EAG/"Aware Day"	\$ 820
<u>CAMBRIDGE</u>		
Dierdre Kaye Luzwick	EAG/"Christ-Kin ... A Community Gospel"	\$ 991
<u>CLEVELAND</u>		
Cleveland Elementary School	AIR/Interdisciplinary	\$ 329
<u>DODGEVILLE</u>		
Folklore Village Farm	Project/"Wisconsin Folklife Center Development"	\$ 4,950
<u>DULUTH, MINNESOTA</u>		
Depot Community Services - St. Louis County Heritage & Arts Center	Project/ "Wisconsin Expansion of Depot Outreach"	\$ 1,600
<u>EAGLE RIVER</u>		
Headwaters Council for the Performing Arts	PAN-Wisconsin	\$ 1,500
<u>EAST TROY</u>		
East Troy Elementary School	AIR/Folk Arts	\$ 325
<u>EAU CLAIRE</u>		
Eau Claire Regional Arts Council, Inc.	Project/"Facilities Needs Assessment"	\$ 1,000
UW-Eau Claire-Activities & Program Office	PAN-Wisconsin	\$14,180
UW-Eau Claire	EAG/"Wisconsin Indian Arts Festival"	\$ 800
<u>ELKHART LAKE</u>		
School District of Elkhart Lake-Glenbeulah	AIR/Interdisciplinary	\$ 737

GRANTEE	PROGRAM/DISCIPLINE	AMOUNT
<u>EVANSVILLE</u>		
Evansville Elementary School	AIR/Literary	\$ 1,703
<u>GLENDALE</u>		
Newberry Brass Quintet	Project/ "Organizational Consultation"	\$ 405
<u>GREEN BAY</u>		
Howe Alternative Elementary School	AIR/Literary	\$ 907
UW-Green Bay	PAN-Wisconsin	\$ 8,000
<u>GREEN LAKE</u>		
Green Lake Festival of Music	Project/"Composer-in-Residence"	\$ 2,000
<u>HAYWARD</u>		
Lac Courte Oreilles Ojibwa School System	AIR/Music	\$ 7,147
<u>HERBSTER</u>		
South Shore School District - Parent Teachers Organization	AIR/Literary	\$ 888
<u>HOLLANDALE</u>		
Pecatonica Elementary School	AIR/Literary	\$ 381
<u>JANESVILLE</u>		
UW Center-Rock County	Project/"Milwaukee Repertory Theatre "Kingdom Come"	\$ 1,500
<u>JEFFERSON</u>		
Jefferson Council for the Performing Arts	PAN-Wisconsin	\$ 7,500
<u>KENOSHA</u>		
Kenosha Symphony Assoc., Inc.	EAG/"Viennese Festival"	\$ 1,000

GRANTEE	PROGRAM/DISCIPLINE	AMOUNT
<u>LA CROSSE</u>		
Central High School	AIR/Visual Arts	\$ 323
State Road Elementary School	AIR/Literary	965
Symphony School of America	Project/"Symphony School Expansion"	\$ 4,800
Viterbo College	PAN-Wisconsin	\$ 2,000
Western Wisconsin Regional Arts	PAN-Wisconsin	\$ 8,055
Western Wisconsin Regional Arts	Project/"Regional Communications"	\$ 1,890
Western Wisconsin Regional Arts	Project/"Art Mobile"	\$ 3,000

MADISON

Artists Theatre Alliance, Inc. Assoc. of Parents & Teachers - Blessed Sacrament School	Project/"Footsteps in the Dark"	\$ 1,700
Boruch, Marianne	AIR/Folk Arts	\$ 1,452
Broom Street Theatre	Project/"304 South Main"	\$ 2,925
Cherry, Kelly	Project/"Research for Portage Play"	\$ 2,000
Common Wealth Development, Inc.	Fellowship/Creative Writing	\$ 5,000
Elvehjem Museum of Art	AIR/Visual Arts	\$ 3,500
	Project/"Summer Jazz from The Elvehjem"	\$ 1,000
Franklin Elementary School Cultural Arts Committee	AIR/Visual Arts	\$ 800
Innovative Arts, Inc. - Opera for the Young	Project/"Cinderella"	\$ 3,950
Kanopy Dance Theatre	Project/"September Dance"	\$ 1,000
Kanopy Dance Theatre- Ann Biberman	Project/"Repent Harlequin"	\$ 3,650
KIDS Repertory Theatre	SA/Theatre	\$ 2,889
KIDS Repertory Theatre	Project/"New Audience Development"	\$ 2,580
Madison Art Center	APS	\$28,000
Madison Art Center	SA/Visual	\$ 6,749
Madison Art Center	AIR/Visual Arts	\$ 1,520
Madison Civic Center	Project/"Phillip Glass"	\$ 5,035
Madison Civic Center	AIR/Dance	\$ 2,320
Madison Civic Center	Project/"Professional Guest Artists, 1983-84 Season"	\$ 3,435
Midvale School	AIR/Dance	\$ 5,048
Nechvatal, Dennis	Fellowship/Visual	\$ 7,500
Nielsen, Niels	Project/"The Perception of Mona Webb"	\$ 1,000
Ruffolo, Lisa	Fellowship/Creative Writing	\$ 2,500
State Historical Society of Wisconsin	AIR/Literary	\$ 7,158
Van Hise Elementary School	AIR/Dance	\$ 916
UW-Extension Arts Develop- ment Unit	Project/"Wisconsin Plays for Youth"	\$ 2,300
UW-Madison-Helen Allen Textile Collection	Project/"Textiles and Paintings of India"	\$ 7,850

GRANTEE	PROGRAM/DISCIPLINE	AMOUNT
<u>MARINETTE</u>		
UW-Center Marinette Co.	Project/ "Milw. Repertory Touring Performance of "Kingdom Come"	\$ 1,500
<u>MARSHFIELD</u>		
UW-Center Marshfield-Wood Co.	PAN-Wisconsin	\$ 6,000
UW-Center Marshfield-Wood Co.	EAG/Funds for Milwaukee Symphony Orchestra presentation	\$ 900
<u>MENASHA</u>		
Fox Valley Symphony Assoc. Inc	Project/ "String Principals and Clinicians"	\$ 3,865
<u>MENOMONIE</u>		
UW-Stout: Performing Arts Commission	Project/"Ko-Thi Dance Co."	\$ 4,480
<u>MEQUON</u>		
Mequon-Thiensville School Dist.	AIR/Literary	\$ 1,830
<u>MERRILL</u>		
Jefferson Elementary School	AIR/Folk Arts	\$ 688
Washington Elementary School	AIR/Visual	\$ 697
<u>MILWAUKEE</u>		
Alexander Mitchell School	AIR/Visual-Dance	\$ 1,621
ARTREACH Milwaukee, Inc.	Project/"Introduction to Dance for Special Populations"	\$ 4,750
ARTREACH Milwaukee, Inc.	Salary Assistance	\$ 6,346
Atwater Elementary School	AIR/Visual	\$ 1,174
Ballet Foundation of Milwaukee	APS	\$21,380
Bamberger, Tom	Fellowship/Visual	\$ 5,000
Bamberger, Tom	Project/"Faces"	\$ 1,892
Elm Creative Arts School & Roosevelt Middle School for the Creative Arts	AIR/Visual	\$ 617
Elm Creative Arts School & Roosevelt Middle School for the Creative Arts	AIR/Dance	\$ 1,214
Fifty-fifth (55th) Street School	AIR/Dance	\$ 321
Florentine Opera Company	APS	\$13,500
Friends Mime Theatre	EAG/Brave New 1984 Production	\$ 1,000

GRANTEE	PROGRAM/DISCIPLINE	AMOUNT
<u>MILWAUKEE</u>		
Golda Meir School	AIR/Visual	\$ 5,341
Gunderman, Karen	Project/"Works from Chan-Chan"	\$ 3,687
Hazard, James	Fellowship/Creative Writing	\$ 7,500
Hollywood, Alexa	Project/"Dance"	\$ 900
King, Katherine	Project/ "Sculpture Series "The Seven Deadly Sins"	\$ 1,953
Kingsbury, Anne	Project/"Fine Print Journal Pages"	\$ 1,825
Milwaukee Art Museum	EAG/Schomer Lichtner Retrospective Exhibition	\$ 345
Milwaukee Art Museum	Project/"Emerging Imagists"	\$ 4,000
Milwaukee Art Museum	Project/"National Fiber Exhibits"	\$ 5,000
Milwaukee Art Museum	Project/"Wisconsin Directions 4"	\$ 7,800
Milwaukee Artists Foundation	SA/Community	\$ 4,319
Milwaukee Artists Foundation	SA/Community	\$ 5,220
Milwaukee Artists Foundation	EAG/Fundraising Seminar	\$ 400
Milwaukee County War Memorial Center - PAC	Project/"PAC Facilities Planner"	\$ 5,000
Milwaukee Repertory Theatre	APS	\$48,500
Milwaukee Symphony Orchestra	APS	\$80,890
Morse Middle School	AIR/Visual	\$ 5,945
Oliver Wendell Holmes School	AIR/Dance	\$ 2,576
Paradox Studio Theatre	SA/Theatre	\$ 2,889
People's Theatre, Inc.	Project/"Children's Summer Theatre"	\$ 1,550
Perihelion Galleries	Project/"In Milwaukee"	\$ 1,000
Rondel Arts Studio	Project/"Summer Street Studio"	\$ 3,650
Samerjan, Stephen	Project/"Dogon Garner: Second Generation"	\$ 1,500
Sayers, John Alan	Fellowship/Visual	\$ 2,500
Sinfonia Concertante	SA/Music	\$ 2,625
Skylight Comic Opera	SA/Theatre	\$ 5,540
Skylight Comic Opera	APS	\$ 7,225
Snider, Karen A.	Project/" ransformations of Dorothy"	\$ 3,075
Theatre X, Inc.	Project/ "The Milwaukee Project"	\$19,035
Vopat, Carol	Project/"The Cookie Stories"	\$ 3,000
Wisconsin Coalition for the Arts and Human Needs	APS	\$ 5,000
Wisconsin Heritages, Inc.	SA/Community	\$ 5,929
Woodland Pattern, Inc.	Project/"Fine Print Broadside Series"	\$ 2,340
Woodland Pattern, Inc.	Project/"New Arts Sampler"	\$ 4,030

<u>MONONA</u>		
La Claire, Louis	EAG/"Twas the Brass Before Christmas"	\$ 663

<u>MONROE</u>		
---------------	--	--

GRANTEE	PROGRAM/DISCIPLINE	AMOUNT
<u>MT. HOREB</u>		
Mt. Horeb Primary School	AIR/Folk Arts	\$ 869
<u>NEKOOSA</u>		
Alexander Middle School	AIR/Literary	\$ 798
Nekoosa Elementary School	AIR/Folk Arts	\$ 1,275
Nekoosa High School	AIR/Folk Arts	\$ 387
<u>NESHKORO</u>		
Neshkoro Grade School	AIR/Music	\$ 221
<u>NEW HOLSTEIN</u>		
School District of New Holstein	AIR/Literary	\$ 999
<u>NEWTON</u>		
St. Isidore School	AIR/Visual Arts	\$ 319
<u>OAK CREEK</u>		
Oak Creek-Franklin Joint School District	AIR/Interdisciplinary	\$ 1,374
Oak Creek-Franklin Joint School District	AIR/Visual Arts	\$ 1,088
Oak Creek-Franklin Joint School District	AIR/Dance	\$ 1,082
Oak Creek-Franklin Joint School District	AIR/Visual Arts	\$ 1,076
<u>OSHKOSH</u>		
City of Oshkosh	Project/"Grand Opera House Restoration"	\$ 5,000
Merrill Elementary School	AIR/Dance	\$ 366
Merrill Elementary-Oaklawn Elementary	EAG/George Shannon Residency	\$ 420
Oaklawn Elementary School	AIR/Dance	\$ 366
UW-Oshkosh Theatre	Project/MRT'S "Kingdom Come"	\$ 3,000
<u>PLATTEVILLE</u>		
UW-Platteville/UW Performing Arts Committee	PAN-Wisconsin	\$ 6,270
Wisconsin Shakespeare Festival	EAG/1984 WI Shakespeare Festival	\$ 1,000

GRANTEE	PROGRAM/DISCIPLINE	AMOUNT
---------	--------------------	--------

PORTAGE

P.J. Jacobs Junior High School	AIR/Theatre Arts	\$ 1,484
-----------------------------------	------------------	----------

PRAIRIE DU CHIEN

Prairie du Chien Women's Civic Club	PAN-Wisconsin	\$11,785
--	---------------	----------

PRINCETON

Kristeen Helen Grimes for Northern Light	Project/ "Central Wisconsin Library Program"	\$ 1,500
---	---	----------

PULASKI

Pulaski High School	AIR/Friends Mime Theatre	\$ 1,321
---------------------	--------------------------	----------

RACINE

Racine Art Assoc./ Chas. A. Wustum Museum of Fine Arts	Wustum Permanent Collection Cataloguing Project	\$ 9,500
Racine Arts Council, Inc.	EAG/Challenge Grant-United Fund Preparation	\$ 969

REEDSVILLE

Reedsville Public School	AIR/Music	\$ 332
--------------------------	-----------	--------

RHINELANDER

Northwoods Community Arts Project	Project/"Director for Northwoods Region	\$19,354
School District of Rhinelander	AIR/Visual Arts	\$ 1,496
School District of Rhinelander	EAG/AIR	\$ 200
WXPR Public Radio/ White Pine Comm. Broadcasting	Project/"WXPR Regional Folk Concert Series"	\$ 1,000
WXPR Public Radio/ White Pine Comm. Broadcasting	Project/"Folk Music of North- eastern Wisconsin"	\$ 1,500

RICE LAKE

Barron County Campus Found./ UW Center Barron County	PAN-Wisconsin	\$2,000
---	---------------	---------

RIVER FALLS

Johnston, Randy	Project/"Low Temperature Firing"	\$ 1,122
-----------------	----------------------------------	----------

GRANTEE	PROGRAM/DISCIPLINE	AMOUNT
<u>RUDOLPH</u>		
Rudolph Elementary School	AIR/Literary	\$ 433
<u>SHARON</u>		
Sharon Community Schools	AIR/Literary	\$ 716
<u>SHAWANO</u>		
Shawano County Arts Council	Salary Assistance	\$ 4,999
<u>SHEBOYGAN</u>		
Pigeon River Elementary School	AIR/Music	\$ 329
Sheboygan Area School District	AIR/Visual Arts	\$ 4,500
John Michael Kohler Arts Center	AIR/Music	\$ 1,710
Sheboygan Arts Foundation	Project/"The Alternative Image II)"	\$10,000
U.S. Grant Elementary School	AIR/Literary	\$ 321
John Michael Kohler Arts Center	AIR/Visual	\$ 1,360
<u>SHOREWOOD</u>		
Yannay, Yehuda	EAG/"Recorder Quintet"	\$ 1,000
<u>SPRING GREEN</u>		
American Players Theatre	APS	\$38,000
<u>STEVENS POINT</u>		
Central Wisconsin Symphony Orchestra	Project/"Thirty-Fifth Anniversary Commission"	\$ 250
Watson, Lawrence E.	Project/"Nothing to Be Afraid Of"	\$ 2,000
UW-Stevens Point Arts & Letters	PAN-Wisconsin	\$ 7,180
UW-Stevens Point/Carlsten Gallery	Project/"Devices: An Exhibition of Technological Art"	\$ 6,881
<u>STURGEON BAY</u>		
School District of Sevastopol Sturgeon Bay Elementary School - Parent-Teacher Group	AIR/Music	\$ 903
Thomas J. Walker Middle School	AIR/Folk Arts	\$ 1,877
	AIR/Literary	\$ 644
<u>TOMAHAWK</u>		
Tomahawk Elementary School	AIR/Dance	\$ 368

GRANTEE	PROGRAM/DISCIPLINE	AMOUNT
<u>VERONA</u>		
Verona Area Elementary School	EAG/Kanopy Dance Troupe	\$ 1,000
<u>VIOLA</u>		
Kickapoo Artisans Guild	Project/"Kickapoo Artisans Guild Development"	\$ 4,500
Kickapoo Artisans Guild	EAG/Kickapoo Artisans Guild Marketing	\$ 875
<u>WALWORTH</u>		
Walworth Public School	AIR/Literary	\$ 505
<u>WATERTOWN</u>		
Watertown Unified School Dist.	AIR/Folk Arts	\$ 3,726
<u>WAUKESHA</u>		
Prairie School	AIR/Literary	\$ 820
Save-A-Farm, Inc.	Project/"Organizational Consultancy"	\$ 1,220
Waukesha Civic Theatre	Project/"WCT Studio Series"	\$ 1,690
Waukesha Symphony, Inc.	Project/"Waukesha Symphony Youth Invitational"	\$ 1,255
Young Audiences of Wisconsin	Project/"Promote the Arts"	\$ 2,300
<u>WAUSAU</u>		
The Performing Arts Foundation	PAN-Wisconsin	\$ 9,000
The Wausau Conservatory of Music	SA/Music	\$ 4,911
Wausau West High School	AIR/Theatre	\$ 1,150
<u>WHITEWATER</u>		
UW-Whitewater Cultural Affairs	PAN-Wisconsin	\$12,000
<u>WISCONSIN RAPIDS</u>		
Arts Council of South Wood County, Inc.	Project/"Scandinavian Festival"	\$ 2,410
Grove & Pitsch Elementary Schools	AIR/Music	\$ 691
Howe School	AIR/Music	\$ 460

GRANTS AWARDED IN FISCAL YEAR 85

GRANTEE	PROGRAM/DISCIPLINE	AMOUNT
<u>AMHERST</u>		
Amherst Elementary School	AIR/Literary	\$ 548
River Festival of the Arts Steering Committee	Project/Community	\$ 3,000
<u>APPLETON</u>		
Holy Angels School	AIR/Theatre-Mime	\$ 465
Jefferson Elementary School	AIR/Visual	\$ 3,587
Lawrence University	PAN-Wisconsin	\$ 1,715
Lawrence University Office of Campus Life	Project/Theatre-Dance	\$ 6,084
<u>ASHLAND</u>		
Northland College	Project/Literary	\$ 1,411
Northland College Arts and Letters Series	PAN-Wisconsin	\$ 6,000
<u>BANGOR</u>		
School District of Bangor	AIR/Interdisciplinary	\$ 789
<u>BARABOO</u>		
UW Center-Baraboo/Sauk County	PAN-Wisconsin	\$ 6,000
<u>BAYFIELD</u>		
Red Cliff Cultural Institute	Apprenticeship/Folk Arts	\$ 1,000
Red Cliff Cultural Institute	Project/Community	\$ 2,500
<u>BEAR CREEK</u>		
St. Mary School	AIR/Interdisciplinary	\$ 497
<u>BELOIT</u>		
Beloit Turner School District	AIR/Dance	\$ 922

GRANTEE	PROGRAM/DISCIPLINE	AMOUNT
<u>BIRCHWOOD</u>		
Aware Community Council	Project/Community	\$ 1,000
<u>BLACK EARTH</u>		
Spring, Cynthia	Project/Visual	\$ 3,768
<u>BLACK RIVER FALLS</u>		
Thayer, Arvina	Apprenticeship/Folk Arts	\$ 2,000
<u>BROOKFIELD</u>		
Sinfonia Concertante	SA/Music	\$ 1,875
<u>BROOKLYN</u>		
Brooklyn Elementary School	AIR/Literary	\$ 1,044
<u>BROWN DEER</u>		
Brown Deer Middle School	AIR	\$ 1,296
<u>CAMBRIDGE</u>		
Cambridge Community Schools Luzwick, Deirdre Kaye	AIR/Literary Project/Visual	\$ 934 \$ 2,117
<u>CASCO</u>		
Holy Trinity Catholic School	AIR/Interdisciplinary	\$ 695
<u>CEDARBURG</u>		
Thorson Elementary School	AIR/Visual	\$ 1,343
<u>CHIPPEWA FALLS</u>		
First Ward Elementary School	AIR/Folk Music	\$ 1,892

GRANTEE	PROGRAM/DISCIPLINE	AMOUNT
<u>CUMBERLAND</u>		
Hart, Margaret	Apprenticeship/Folk Arts	\$ 1,860
<u>DODGEVILLE</u>		
Folklore Village Farm	Project/Community	\$ 2,000
<u>DULUTH, MN</u>		
Depot Community Services- St. Louis County Heritage and Arts Center	Project/Community	\$ 2,000
<u>DURAND</u>		
City of Durand	Project/Visual	\$ 1,454
<u>EAGLE RIVER</u>		
Headwaters Council for the Performing Arts	PAN-Wisconsin	\$ 2,750
<u>EAU CLAIRE</u>		
Chippewa Valley Symphony	Project/Music	\$ 542
Manz Elementary School	AIR/Theatre-Mime	\$ 647
Mihalyi, Martha	Fellowship/Literary	\$ 5,000
Park Elementary School	AIR/Folk Music	\$ 673
South Junior High School	AIR/Dance	\$ 685
Waterstreet Big Band	EAG/Music	\$ 400
UW-Eau Claire	Project/Community	\$ 900
UW-Eau Claire	Project/Community	\$ 5,000
UW-Eau Claire Activities and Programs	PAN-Wisconsin	\$ 7,000
<u>ELKHART LAKE</u>		
School District of Elkhart Lake- Glenbeulah	AIR/Visual	\$ 933

GRANTEE	PROGRAM/DISCIPLINE	AMOUNT
<u>EVANSVILLE</u>		
Evansville Elementary School	AIR/Visual	\$ 7,086
<u>FAIRCHILD</u>		
Deere, Elizabeth	Apprenticeship/Folk Arts	\$ 1,300
Thunder, Mary	Apprenticeship/Folk Arts	\$ 2,000
<u>FISH CREEK</u>		
Gibraltar Area Schools	AIR/Interdisciplinary	\$ 1,587
Gibraltar Area Schools	AIR/Visual	\$ 1,451
<u>FOND DU LAC</u>		
Margaret K. Roberts School	AIR/Literary	\$ 775
<u>FONTANA</u>		
Fontana Elementary School	AIR/Literary	\$ 992
<u>GREEN BAY</u>		
Green Bay Symphony Orchestra	Project/Music	\$ 1,250
Howe Alternative Elem. School	AIR/Visual	\$ 2,282
UW-Green Bay	PAN-Wisconsin	\$ 7,163
<u>GREEN LAKE</u>		
Green Lake Festival of Music	SA/Music	\$ 6,945
<u>HAYWARD</u>		
Lac Courte Oreilles Ojibwa School System	AIR/Interdisciplinary-Folk Music	\$ 4,394
<u>JEFFERSON</u>		
Jefferson Council for the Performing Arts	PAN-Wisconsin	\$ 3,042

GRANTEE	PROGRAM/DISCIPLINE	AMOUNT
<u>KENOSHA</u>		
UW-Parkside	PAN-Wisconsin	\$ 3,042
<u>LAC DU FLAMBEAU</u>		
Mush kiig wa ga Mang	Apprenticeship/Folk Arts	\$ 2,000
Daniels, Billy	Apprenticeship/Folk Arts	\$ 2,000
Daniels, Josephine	Apprenticeship/Folk Arts	\$ 2,000
<u>LA CROSSE</u>		
UW-La Crosse Lectures & Concerts	PAN-Wisconsin	\$ 3,042
Western Wisconsin Regional Arts	PAN-Wisconsin	\$ 2,750
<u>LADYSMITH</u>		
Mount Senario College	AIR/Interdisciplinary	\$ 8,124
Mount Senario College	EAG/Folk Arts	\$ 900
Mount Senario College	Project/Music	\$ 900
<u>LITTLE CHUTE</u>		
Little Chute Middle School	AIR/Literary	\$ 1,157
<u>MADISON</u>		
Abraham Lincoln Elem. School PTO	AIR/Dance	\$ 3,359
Art Place, Inc.	Project/Visual	\$ 452
Berg-Pigorsch, Phyllis	Project/Visual	\$ 5,940
Berndt, Randall	Project/Visual	\$ 1,968
Blessed Sacrament School Cultural Arts Committee	AIR/Interdisciplinary	\$ 609
Bram's Addition Neighborhood Assn.	Project/Community	\$ 8,500
Center for Arts Administration	Project/Community	\$ 750
Cherokee Heights Middle School	AIR/Dance	\$ 907
Cherry, Kelly	Project/Literary	\$ 1,500
Chronos	Project/Music	\$ 820
Ebony Expressions	EAG/Theatre-Dance	\$ 750
Friends of the Elvehjem	Project/Music	\$ 1,000
Friends of WHA	Project/Music	\$ 2,453
John Muir School	AIR/Dance	\$ 953
K.I.D.S. Repertory Theatre	Project/Theatre-Dance	\$ 925
Koch, Lewis	Project/Visual	\$ 1,086
Lobo-Cobb, Angela	Project/Literary	\$ 3,000

GRANTEE	PROGRAM/DISCIPLINE	AWARD
<u>MADISON CONT.</u>		
Madison Art Center	APS	\$ 5,000
Madison Art Center	SA/Visual	\$ 4,820
Madison East High School	AIR/Music	\$ 839
Madison Repertory Theatre	SA/Theatre-Dance	\$ 5,130
Marquette Elem. School PTG	AIR/Dance	\$ 3,514
Murphy, J.J.	Project/Visual	\$10,000
Naunas, Thomas A.	Project/Visual	\$ 1,750
Rosenbaum, Alan	Project/Visual	\$ 1,087
Shorewood Hills Elem. School PTO	AIR/Dance	\$ 5,957
Thomas Jefferson Middle School	AIR/Literary	\$ 1,080
Van Hise Elementary School	AIR/Interdisciplinary	\$ 743
Wagler, Mark	Project/Literary	\$ 2,870
Wilkerson, Michael	Project/Literary	\$ 2,800
Wis. Children's Center	Project/Visual	\$ 2,668
Memorial Union Building Assn.	Project/Theatre-Dance	\$ 3,042
UW Center-Marshfield/Wood County	PAN-Wisconsin	\$10,000

MCFARLAND

McFarland Elementary School	AIR/Literary	\$ 1,080
-----------------------------	--------------	----------

MENASHA

Fox Valley Symphony Assn., Inc.	Project/Music	\$ 3,000
---------------------------------	---------------	----------

MENOMONIE

Mabel Tainter Memorial Building	PAN-Wisconsin	\$ 2,087
---------------------------------	---------------	----------

MEQUON

Paul, Joyce	Fellowship/Visual	\$ 7,500
-------------	-------------------	----------

MERRILL

Washington Elementary School	AIR/Dance	\$ 473
------------------------------	-----------	--------

MILWAUKEE

ARTREACH Milwaukee	Project/Community	\$ 2,500
ARTREACH Milwaukee	Project/Visual	\$ 4,000
ARTREACH Milwaukee	SA/Visual	\$ 4,442
Ballet Foundation of Milw., Inc.	APS	\$20,000
Bauer Dance Ensemble	Project/Theatre-Dance	\$ 8,703
Beroes, Stefanie	Project/Visual	\$ 2,141

GRANTEE	PROGRAM/DISCIPLINE	AWARD
<u>MILWAUKEE CONT.</u>		
Centro de la Comunidad Unida	Project/Music	\$ 1,500
Colorlines, Inc.	Project/Literary	\$ 900
Community Cultural Center	Project/Theatre-Dance	\$ 2,200
Fifty-fifth Street School	AIR/Music	\$ 453
Finley, Michael	Fellowship/Literary	\$ 5,000
Florentine Opera Company of Milw.	APS	\$ 9,000
Friends Mime Theatre	Project/Theatre-Dance	\$ 3,000
Great Lakes Film and Video	Project/Visual	\$ 2,334
Imagination Celebration of Milw.	Project/Theatre-Dance	\$ 1,500
J.U.M.P. Dance Theatre	Project/Theatre-Dance	\$ 2,990
Ko-Thi Dance Company, Inc.	Project/Theatre-Dance	\$ 4,000
Lloyd Street School	AIR/Dance	\$ 760
Loewen, Debra	Project/Theatre-Dance	\$ 1,680
Milwaukee Art Museum	Project/Visual	\$ 2,001
Milwaukee Artists Foundation	SA/Community	\$ 4,872
Milwaukee Christian Center	AIR/Visual	\$ 1,787
Milw. Co. War Memorial Center	Project/Community	\$ 1,900
Milw. High School of the Arts	AIR/Visual-Interdisciplinary	\$ 6,019
Milw. Inner City Arts Council	Project/Community	\$ 1,130
Milwaukee Public Library	AIR	\$ 3,353
Milwaukee Public Library	Project/Literary	\$ 7,000
Milwaukee Repertory Theatre	APS	\$49,000
Milwaukee Repertory Theatre	NEA Theatre Touring Grant	\$ 6,252
Milwaukee Spectrum, Inc.	AIR/Literary-Dance	\$ 9,768
Milwaukee String Players	Project/Music	\$ 504
Milwaukee Symphony Orchestra	APS	\$88,600
Next Door Foundation	Project/Music	\$ 1,500
Paradox Studio Theatre	Project/Theatre-Dance	\$ 4,383
Pease, James	Project/Music	\$ 3,000
People's Theatre	EAG/Theatre-Dance	\$ 750
Shalom High School	AIR/Visual	\$ 5,000
Skylight Comic Opera, Ltd.	APS/Drama Arts	\$ 7,000
Theatre School, Ltd.	Project/Theatre-Dance	\$ 1,000
Theatre School, Ltd.	Project/Theatre-Dance	\$ 2,000
Theatre X, Inc.	APS	\$ 9,400
UW-Milwaukee	PAN-Wisconsin	\$12,000
Vieux, Maria J.	Fellowship/Visual	\$ 2,500
Vopat, Carole	Project/Literary	\$ 2,500
Wallace, Gerald L.	Project/Music	\$ 504
Wisconsin Heritages, Inc.	SA/Visual	\$ 4,970
Wisconsin Opera Theatre	Project/Music	\$ 2,300
Woodland Pattern, Inc.	Project/Literary	\$ 5,529

MINOCQUA

Lakeland Performing Arts Assn.	Project/Theatre-Dance	\$ 3,042
--------------------------------	-----------------------	----------

GRANTEE	PROGRAM/DISCIPLINE	AWARD
<u>MONONA</u>		
Television Learning, Ltd.	Project/Visual	\$ 1,334
<u>MONROE</u>		
Monroe Arts & Activities Ctr.	AIR/Literary	\$ 1,400
Monroe Arts & Activities Ctr.	PAN-Wisconsin	\$ 2,123
<u>MT. HOREB</u>		
Grand, Freya	Project/Visual	\$ 2,494
Hamady, Mary Laird	Project/Interdisciplinary	\$ 1,079
Mt. Horeb Primary School	AIR/Visual	\$ 987
<u>NEILLSVILLE</u>		
Lowe, Annabelle	Apprenticeship/Folk Arts	\$ 1,300
<u>NEKOOSA</u>		
Nekoosa Public Schools	AIR/Theatre-Mime	\$ 807
<u>NEW GLARUS</u>		
New Glarus Public Schools	AIR/Visual	\$ 620
<u>NEW HOLSTEIN</u>		
School Dist. of New Holstein	AIR/Dance	\$ 1,103
<u>ONEIDA</u>		
Oneida Tribal School	AIR/Literary	\$ 1,060
<u>ORFORDVILLE</u>		
Parkview School District	AIR/Literary	\$ 1,181
<u>OSHKOSH</u>		
City of Oshkosh	Project/Visual	\$ 3,335
Paine Art Center	SA/Visual	\$ 9,180

GRANTEE	PROGRAM/DISCIPLINE	AWARD
<u>PLATTEVILLE</u>		
UW-Platteville Ctr. for the Arts Wis. Shakespeare Festival	PAN-Wisconsin Project/Theatre-Dance	\$14,341 \$ 1,000
<u>PORT WING</u>		
South Shore School District	AIR/Literary	\$ 644
<u>PRAIRIE DU CHIEN</u>		
Prairie du Chien Perf. Arts Comm.	PAN-Wisconsin	\$10,455
<u>PULASKI</u>		
Pulaski High School	AIR/Theatre-Mime	\$ 1,470
<u>RACINE</u>		
Racine Theatre Guild	Project/Theatre-Dance	\$ 4,600
<u>RHINELANDER</u>		
James Williams Jr. High WXPR Public Radio	AIR/Interdisciplinary Project/Community	\$ 1,274 \$ 2,500
<u>RICE LAKE</u>		
Barron Co. Campus Foundation	PAN-Wisconsin	\$ 6,042
<u>SHARON</u>		
Sharon Community School	AIR/Visual	\$ 941
<u>SHAWANO</u>		
Shawano Co. Arts Council Shawano Co. Arts Council	PAN-Wisconsin SA/Community	\$ 2,100 \$ 4,943
<u>SHEBOYGAN</u>		
Sheboygan Area School District Sheboygan Arts Foundation Sheboygan Arts Foundation Sheboygan Arts Foundation	AIR/Visual-Music AIR/Literary PAN-Wisconsin Project/Visual	\$ 3,000 \$ 2,916 \$ 4,148 \$ 6,670

GRANTEE	PROGRAM/DISCIPLINE	AWARD
<u>SPRING GREEN</u>		
American Players Theatre	APS	\$38,000
<u>STEVENS POINT</u>		
Behm, Richard	Fellowship/Literary	\$ 5,000
Ginocchio, Frances	Project/Visual	\$ 1,417
UW-Stevens Point Foundation	Project/Music	\$ 950
<u>STURGEON BAY</u>		
School District of Sevastopol	AIR/Dance	\$ 772
<u>SUN PRAIRIE</u>		
Sun Prairie Jr. High School	AIR/Literary	\$ 718
<u>TOMAH</u>		
Thundercloud, Irene	Apprenticeship/Folk Arts	\$ 2,000
<u>WALWORTH</u>		
Walworth Joint School Dist. #1	AIR/Interdisciplinary	\$ 286
<u>WATERLOO</u>		
Waterloo Elementary School	AIR/Interdisciplinary-Music	\$ 400
<u>WATERTOWN</u>		
Bedford, William	Fellowship/Visual	\$ 5,000
<u>WAUKESHA</u>		
Waukesha Symphony, Inc.	Project/Music	\$ 1,290
<u>WAUSAU</u>		
Wausau Conservatory of Music	SA/Music	\$ 3,829
Wausau Performing Arts Foundation	PAN-Wisconsin	\$ 6,500
<u>WESTFIELD</u>		
Westfield Elementary School	AIR/Visual	\$ 3,468

GRANTEE	PROGRAM/DISCIPLINE	AWARD
<u>WHITEWATER</u>		
Lincoln Elementary School	AIR/Visual	\$ 1,397
UW-Whitewater Cultural Affairs	PAN-Wisconsin	\$18,246
UW-Whitewater Friends of Poetry	Project/Literary	\$ 719
Washington School P & T Together	AIR/Literary	\$ 660

WILLIAMS BAY

School Dist. of Williams Bay	AIR/Visual	\$ 2,450
------------------------------	------------	----------

WISCONSIN DELLS

Funmaker, Kenneth Sr.	Apprenticeship/Folk Arts	\$ 1,300
-----------------------	--------------------------	----------

WISCONSIN RAPIDS

Arts Council of South Wood Co.	Project/Theatre-Dance	\$ 3,042
Grove Elementary School	AIR/Theatre-Mime	\$ 630
Pitsch Elementary School	AIR/Theatre-Mime	\$ 785
Washington Elementary School	AIR/Folk Music	\$ 1,000
Woodside School	AIR/Theatre-Mime	\$ 313

PERCENT FOR ART PROJECTS

Contracts for the following building projects were negotiated in FY 83-FY 85 and artworks were completed and installed within that time period unless noted with (*).

Building Site/ Location	Allocation for Artwork	Artist(s)/Medium Selected/Contract Date
Waupun Correctional Institution Gatehouse	\$1,326.00 for Direct Purchase	Dorothy Haas, Milwaukee, Moema Furtado and Mary Johnson, Madison; Paintings. Michael Ward, Randy Becker, both of Milwaukee; Drawings. September 13, 1983.
Waupun Correctional Institution Education Building	\$4,000.00 for Commissioned Artwork	Guido Brink, Milwaukee; Sculpture. October 11, 1983.
UW-Stout Vocational Rehabilitation Institution, Menomonie	\$6,000.00 for Direct Purchase	17 artworks purchased from 15 artists including 7 disabled artists for moveable collection. November 10, 1983.
UW-Eau Claire Davies Student Center	\$2,100.00 (\$2,900.00 from UW-Eau Claire) Commissioned Artwork	Robert Gehrke, Eau Claire; Bronze Wall Relief. January 9, 1984.
UW-Madison King Soils Science Hall	\$6,700.00 for Commissioned Artwork	Peter Flanary, Madison; Wood Mosaic Floor. May 3, 1984.
UW-Milwaukee Enderis Hall	\$5,500.00 for Commissioned Artwork	Christel-Anthony Tucholke and Anthony Stoeveken, Whitefish Bay; Painted Mural. September 20, 1984.
Taycheedah Correctional Institution Visitor's Center	\$5,000.00 for Commissioned Artwork	Mary Benton, Neenah; Collaborative Fiber Artwork with Inmates. October 19, 1984.
UW-La Crosse Cartwright Student Center	\$10,500.00 for Commissioned Artwork	Stephen Fischer, Mequon; Core-Ten Sculpture. October 19, 1984.

Jughes Hall,
Wisconsin Resource
Center, Winnebago

\$14,000.00 for
Commissioned
Artwork and
Direct Purchase

Paul Donhauser, Oshkosh;
Ceramic Mural.
January 4, 1985.
Purchases totaled
\$4,000.00 from 11 artists
for moveable collection.
January 10, 1985.

Southeast Regional
Crime Lab,
Milwaukee

\$5,800.00 for
Commissioned
Artwork

Frances Ginocchio,
Stevens Point; Fiber/
Quilting Works.
March 11, 1985.

Wilson Street State
Office Building,
Madison*

\$19,650.00 for
Commissioned
Artwork

Dennis Nechvatal and
Paula Nees, Madison,
Evelyn Patricia Terry,
Milwaukee; Drawings.
March 28, 1985.

UW-Madison Swine
Teaching and
Research Facility,
Arlington

\$3,000.00 for
Commissioned
Artwork

John Mishler, Goshen,
Indiana; Sculpture.
April 1, 1985.

UW-Madison
Biochemistry
Building*

\$14,000.00 for
Commissioned
Artwork

Stan Shafer, St. Cloud,
Minnesota; Environmental
Work.
June 27, 1985.

*Artwork to be completed and installed in FY 86.